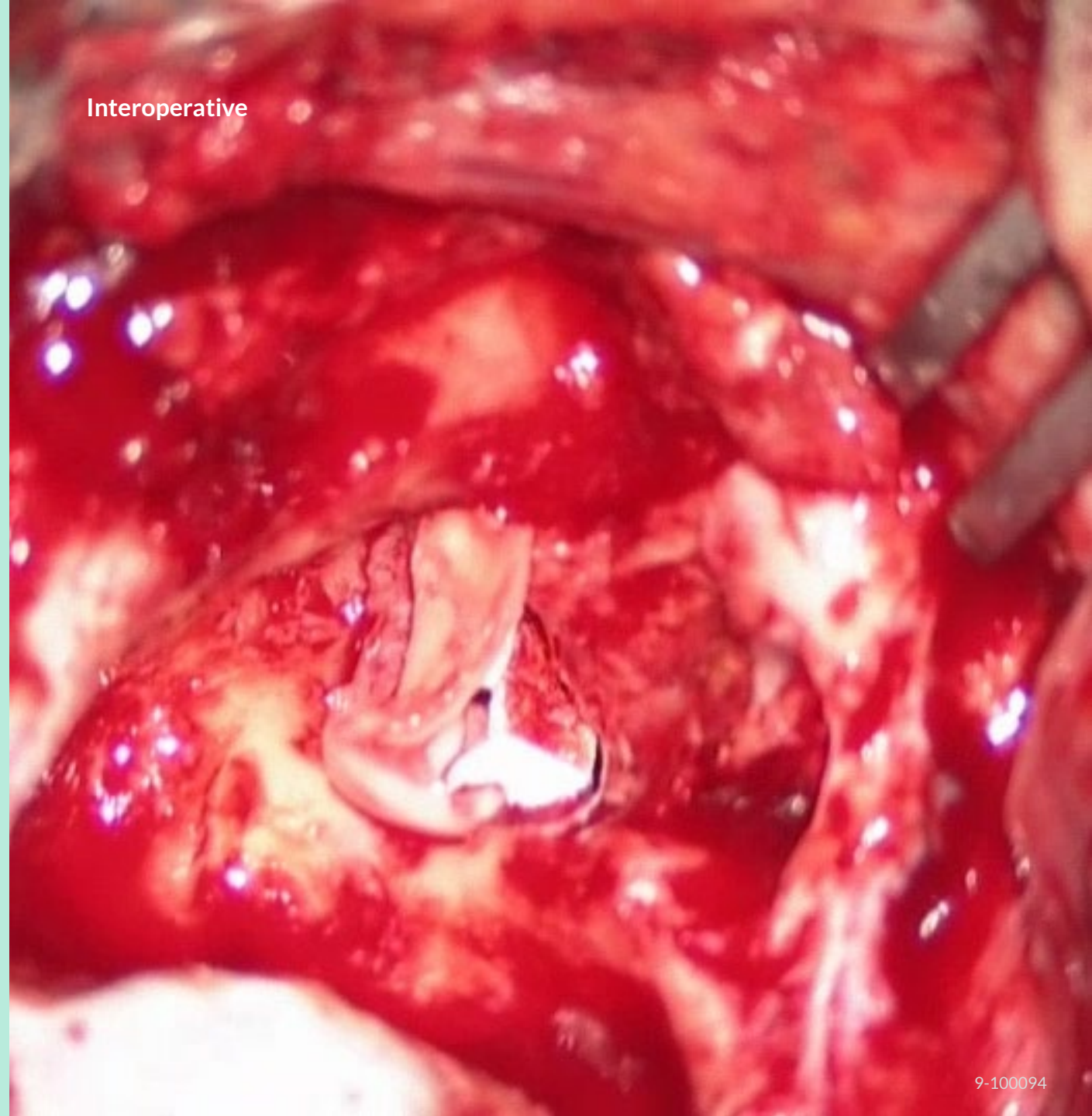


Canal wall down mastoidectomy in pediatric cholesteatoma patient

Patient

A 12-year-old girl who was operated on for a recurrent cholesteatoma of the right ear. The patient had undergone a primary surgery for cholesteatoma 3 years earlier. The recurrent cholesteatoma was located in the tympanic sinus and epitympanic space and on the facial nerve.

Interoperative



7 months post-op

Operation

Canal wall down mastoidectomy with the removal of the malleus and incus. The reconstruction of the ossicular chain with passive middle ear prosthesis and the reconstruction of the ear drum with cartilage. The posterior canal wall was reconstructed with cartilage and the mastoid and epitympanum was obliterated with Bonalive® granules.

Clinical outcome

Postoperative healing was achieved without complications and a dry ear was obtained after four weeks. After healing of the reconstructed posterior wall and ear drum was good and the ear was dry.

